



Before installing the ASP.NET VETtrak API

The ASP.NET VETtrak API is a set of back-end web services, developed in Microsoft .NET, that allows other web sites and applications to access data in VETtrak. The API must be installed into Microsoft Internet Information Services (IIS), running on a Windows machine.

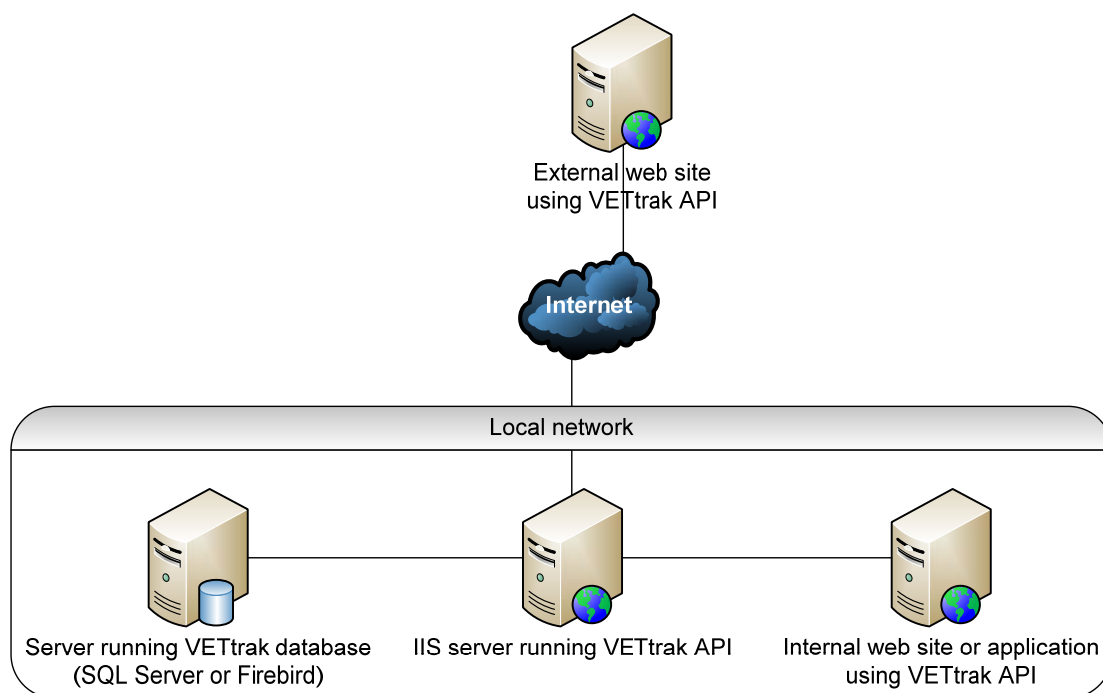
This document gives an overview of the pre-requisites required to run the VETtrak API, and directs you to the appropriate installation instructions document.

Infrastructure pre-requisites

The VETtrak API running on the IIS server connects directly to the VETtrak Firebird or SQL Server database. Any software or hardware firewall between them must be configured to allow the database communication – by default, this is port 3050 for Firebird and port 1433 for SQL Server.

The IIS server running the VETtrak API and the VETtrak database server should be located on the same local network, to make communication between them as efficient as possible. However, only the IIS server running the VETtrak API needs to be accessible over the internet; the VETtrak database server should not be made accessible over the internet.

The server running the web site that uses the VETtrak API does not need to be located on the same network – it can access the VETtrak API over the internet. Of course, an internal web site or application can also use the VETtrak API.



Software pre-requisites

The following table shows which Windows operating systems can be used to run the ASP.NET VETtrak API, and what version of Internet Information Services (IIS) is supported on each. Use this table to determine which of the two installation instruction documents to follow:

- Document 1 is “Installing ASP.NET VETtrak APIs on IIS 5 or 6”.
- Document 2 is “Installing ASP.NET VETtrak APIs on IIS 7 or later”.

Windows version	IIS version	Use document
Windows XP Professional	5.1	1
Windows XP Professional x64	6.0	1
Windows Server 2003	6.0	1
Windows Vista	7.0	2
Windows Server 2008	7.0	2
Windows Server 2008 R2	7.5	2
Windows 7	7.5	2
Windows Server 2012	8.0	2
Windows 8	8.0	2
Windows Server 2012 R2	8.5	2
Windows 8.1	8.5	2

In addition to IIS, the Microsoft .NET Framework 3.5 must be installed before the API can be installed. On Windows Server 2008 R2, Windows Server 2012, Windows 7, and Windows 8, this is already installed as part of the operating system. On other versions of Windows, check the **Add/Remove Programs** or **Programs and Features** list in the Control Panel to see whether Microsoft .NET Framework 3.5 is listed. If it is not listed, download it from Microsoft and install it.

The ASP.NET VETtrak API supports both 32-bit and 64-bit operating systems – it will run as a 64-bit application on a 64-bit operating system.

For live production use, it is recommended to use a Server-class Windows operating system (Windows Server 2003 / 2008 / 2008 R2 / 2012 / 2012 R2). The non-Server editions of Windows may limit the number of simultaneous connections to IIS, which could hamper performance if high volumes of traffic are experienced.